

Reference : GRIL COMPLET CHAZELLES G64

Conforms to standard : EN 1860-1 : 2003

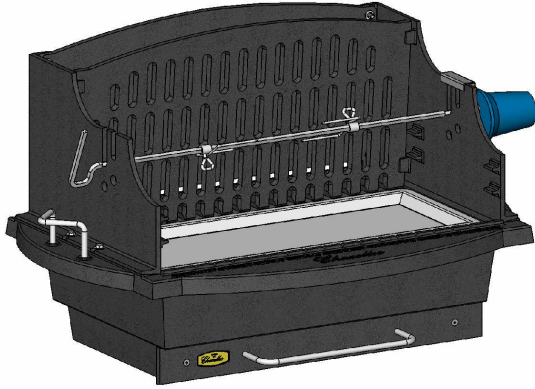
- This grill cannot stand alone, it must be set up on purpose-built stonework.
- 1 LR20 battery, not supplied.

### Technical characteristics:

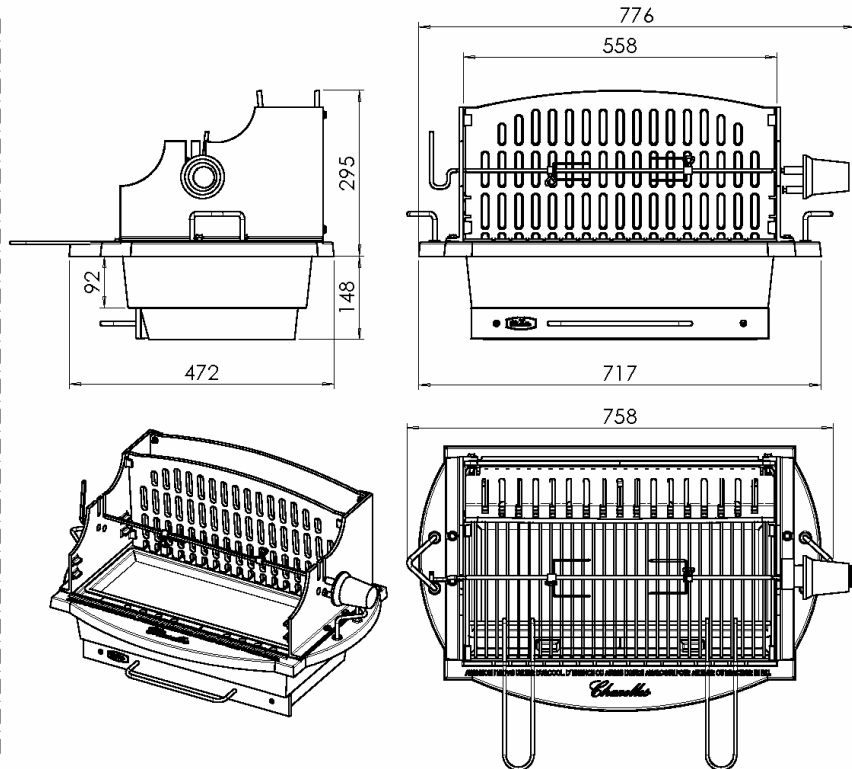
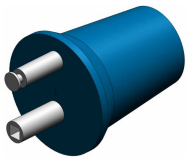
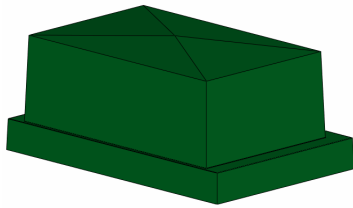
- Grill weight : 66 kg
- Grill dimensions : 720 x 470 x 440 mm
- Insert dimensions : 450 x 340 x 50 mm
- Whole grill made out of cast-iron
- Use : charcoal
- Grill cooking surface : 560 x 340 mm
- Ash drawer
- Rotissoire
- Battery-powered motor

### Options :

- Lid (1) : BLACOU100
- Electric motor (2) : BLAMOT010



2 year warranty



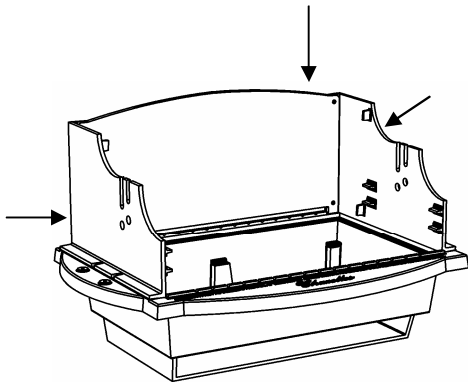
**WARNING ! This barbecue will get very hot. Do not move it while in use.**

**WARNING ! Do not use in enclosed rooms.**

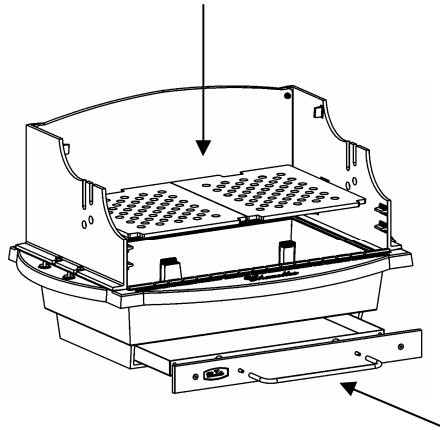
**WARNING ! Do not use alcohol, petrol or any other similar liquid to light or reignite the barbecue.**

**WARNING ! Do not leave the barbecue within reach of children or pets.**

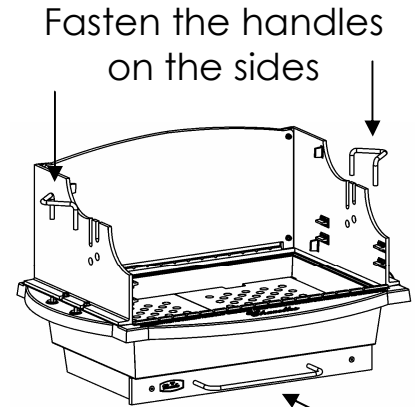
**1 ASSEMBLY**



Place the side panels on the barbecue then screw in the wind break with the screws, washers and nuts provided

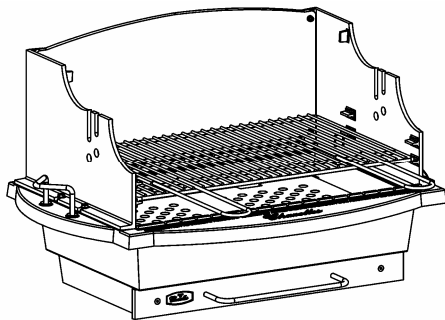


Place the cast-iron grates in the box and the ash drawer underneath

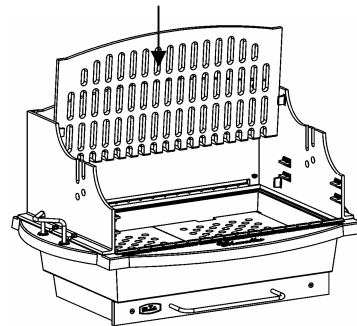


Fasten the handles on the sides

Drawer in use position

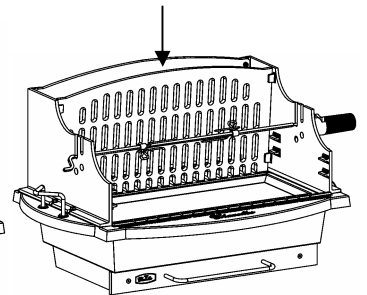


Rack position

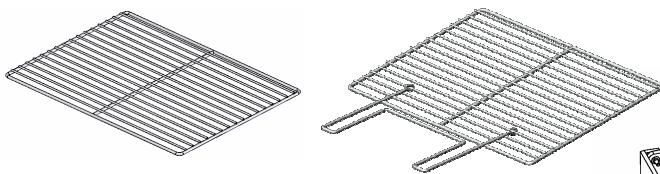


Rotisserie position

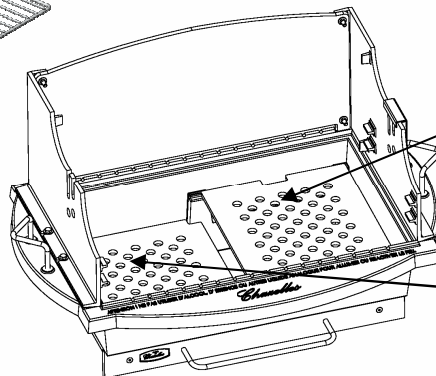
Insert the vertical grate in the notches



**2 ADVICE**



To avoid risks, the handle must be removed from the rack during cooking



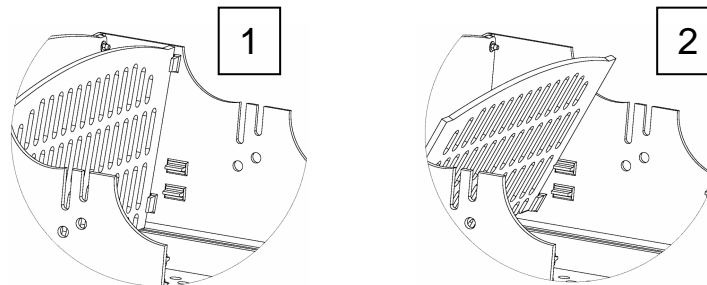
Cast-iron grate in the high position (not much charcoal)

Cast-iron grate in the low position (a lot of charcoal)

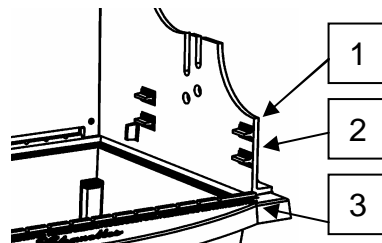
Cooking rack conforms to the regulations in force

**Recommendations for use**

- The maximum authorised load of charcoal must not exceed  $\frac{3}{4}$  of the height of the grill box.
- The barbecue must not be used without the ash drawer in use position under any circumstances.
- Before cooking with it for the first time, the grill must be heated and fuel kept glowing for at least 30 min.
- Cover the fuel with a layer of ash before you cook each time.
- In rotisserie mode:
  - Position 1 : not much charcoal.
  - Position 2 : a lot of charcoal.



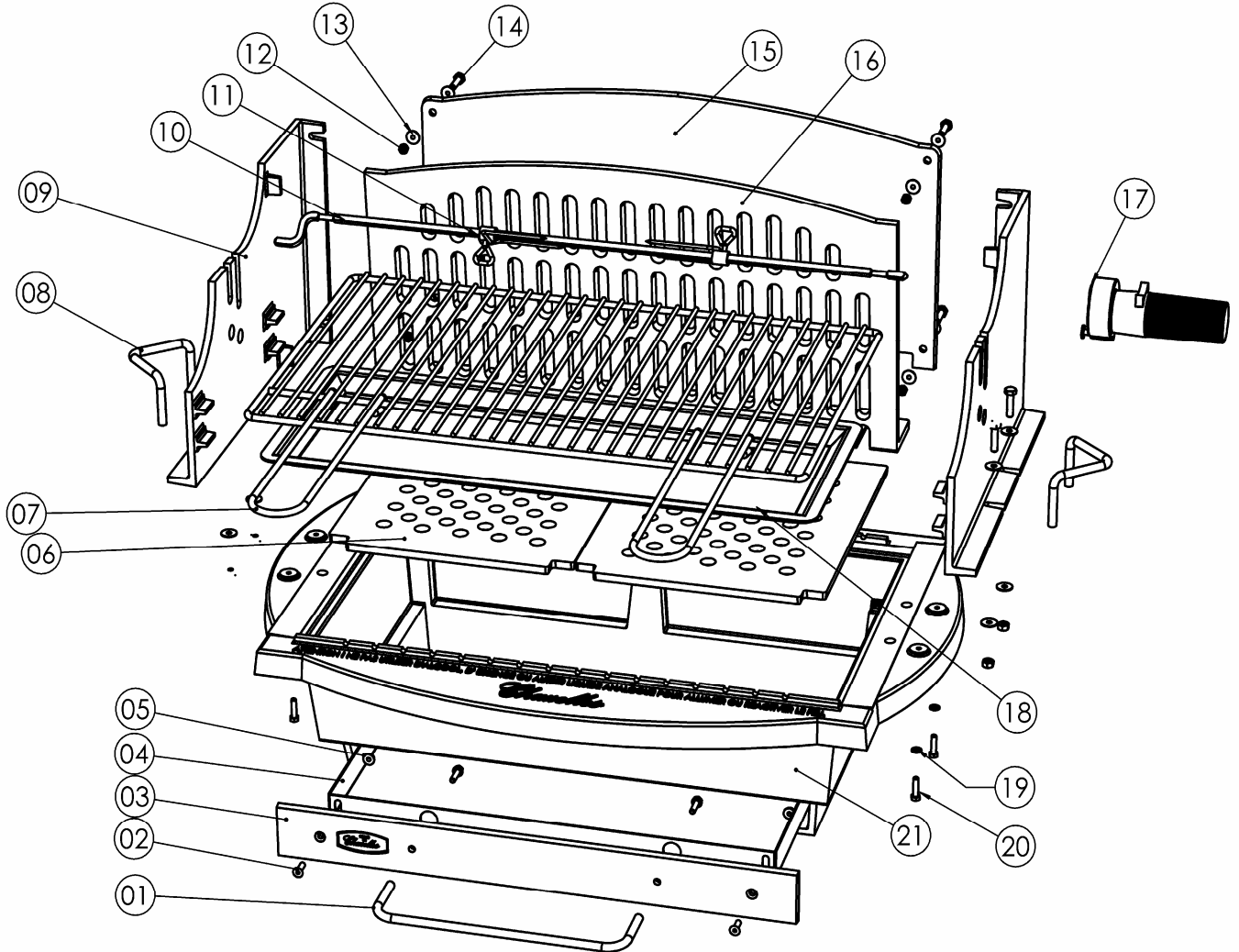
- In grill position, the cooking rack can be placed at 3 different heights:



- Wait until the barbecue has fully cooled down before removing the ash.

**Care and storage advice**

- We recommend that you cover the grill if it is left outdoors, to protect it from bad weather and damp, particularly when it not used for a long period of time.
- Check that the grill and its accessories are cool enough before cleaning them.
- Clean the cooking rack with hot water and soap.
- Clean the grill with a wooden or flexible plastic scraper to remove excess grease.
- Check the drawer after each use. If there is a lot of ash or grease, throw the contents away in an appropriate metal container for this purpose.



NOMENCLATURE 62 PARTS		
REF	NAME	QTY
1	POIGNEE TIROIR	1
2	VIS TFHC 5	2
3	FACADE TIROIR	1
4	TIROIR	1
5	ECROU CRANTE H5	2
6	GRILLE FONTE	2
7	GRILLE DE CUISSON	1
8	POIGNEE GRIL	2
9	JOUE	2

10	BROCHE	1
11	GRIFFE	2
12	ECROU M6	8
13	RONDELLE L6	16
14	VIS TH M6	4
15	PARE-VENT	1
16	GRILLE VERTICALE	1
17	MOTEUR A PILE	1
18	PLAT INOX	1
19	RONDELLE M5	6
20	VIS TH M5	6
21	CUVE	1